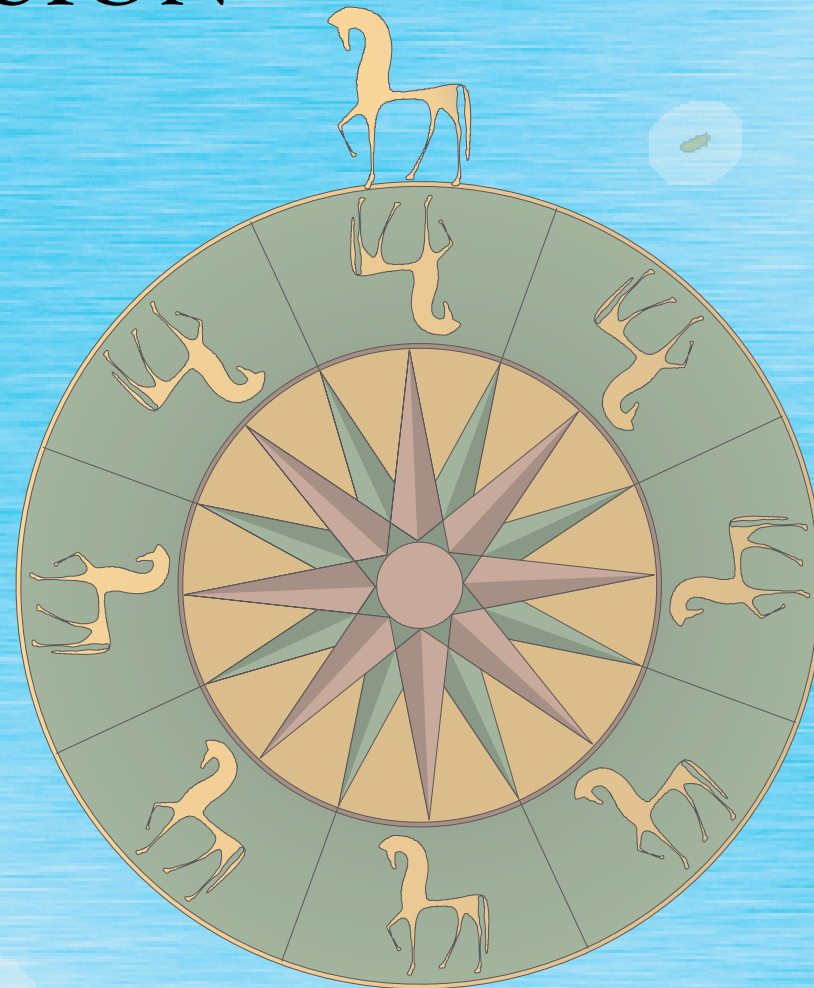


TODD MITCHELL

CARTOGRAPHIC DESIGN



This is the Andean Empires map which I made in my Cartographic Techniques class at California State University Northridge. I wanted to give it the feel of a 1930's text book map. Notice the Incan pots (vectorized from a photo), as well as the custom north arrow made from an ungrouped Illustrator brush. Extents for the different empires were provided by CSUN Staff Cartographer David Deis.

On a grading scale of 1 to 10, this was a 10. This is what Prof. Deis noted in his evaluation:

Date: 05/11/06

Assignment: No. 7

Score: 10

Comments:

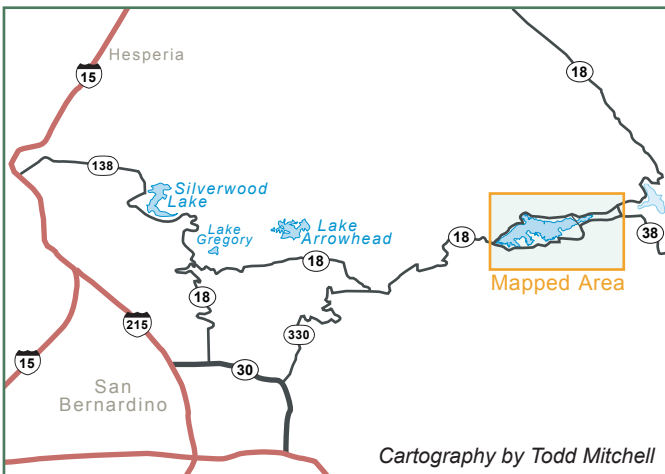
My initial response when opening this file was WOW! I have never seen anything quite like this - very sophisticated. Further inspection reveals an attention to detail not often seen on these projects. I am most impressed! This will definitely be one of the samples I show to future classes - I cannot wait to see what you do with the Etruscan map...





This was my first paying gig as a cartographer. Dr. Amy Shevitz from CSUN's Religious Studies program needed a map of the Ohio River Valley for her manuscript, "Streams: Small Jewish Communities on the Banks of the Ohio". Based on my design abilities shown early on in the cartography class, David Deis recommended me for the job. Thank you David!

Big Bear Lake

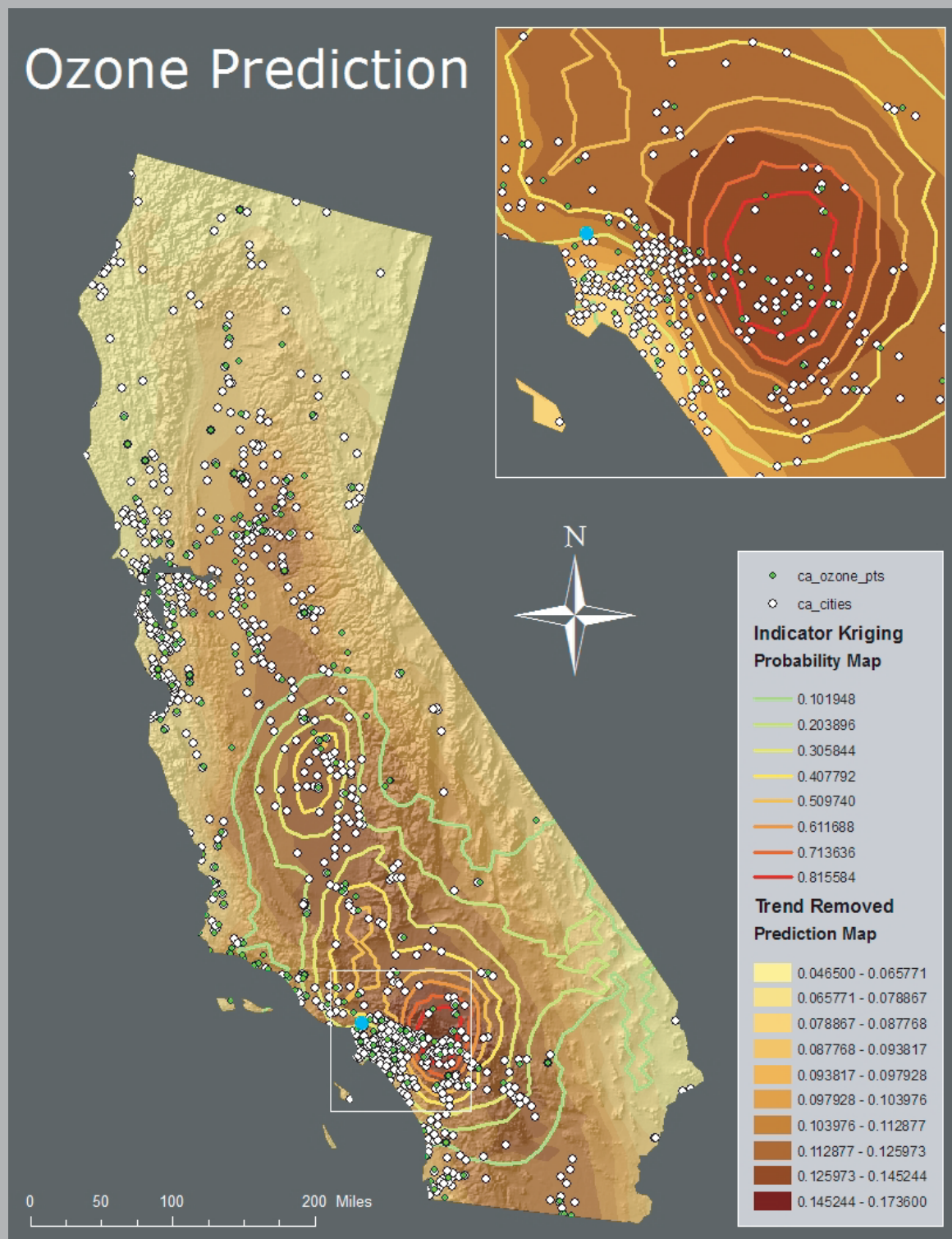


	Campground		Ranger station		Park
	Fishing		Marina		River
	Picnic area		Boat launch		Highway
	RV camping		Sailing		Major road
	Swimming		Golfing		Alpine road (gates locked in winter)
	Horseback riding		Downhill skiing		
	Jeep rental		Hospital		



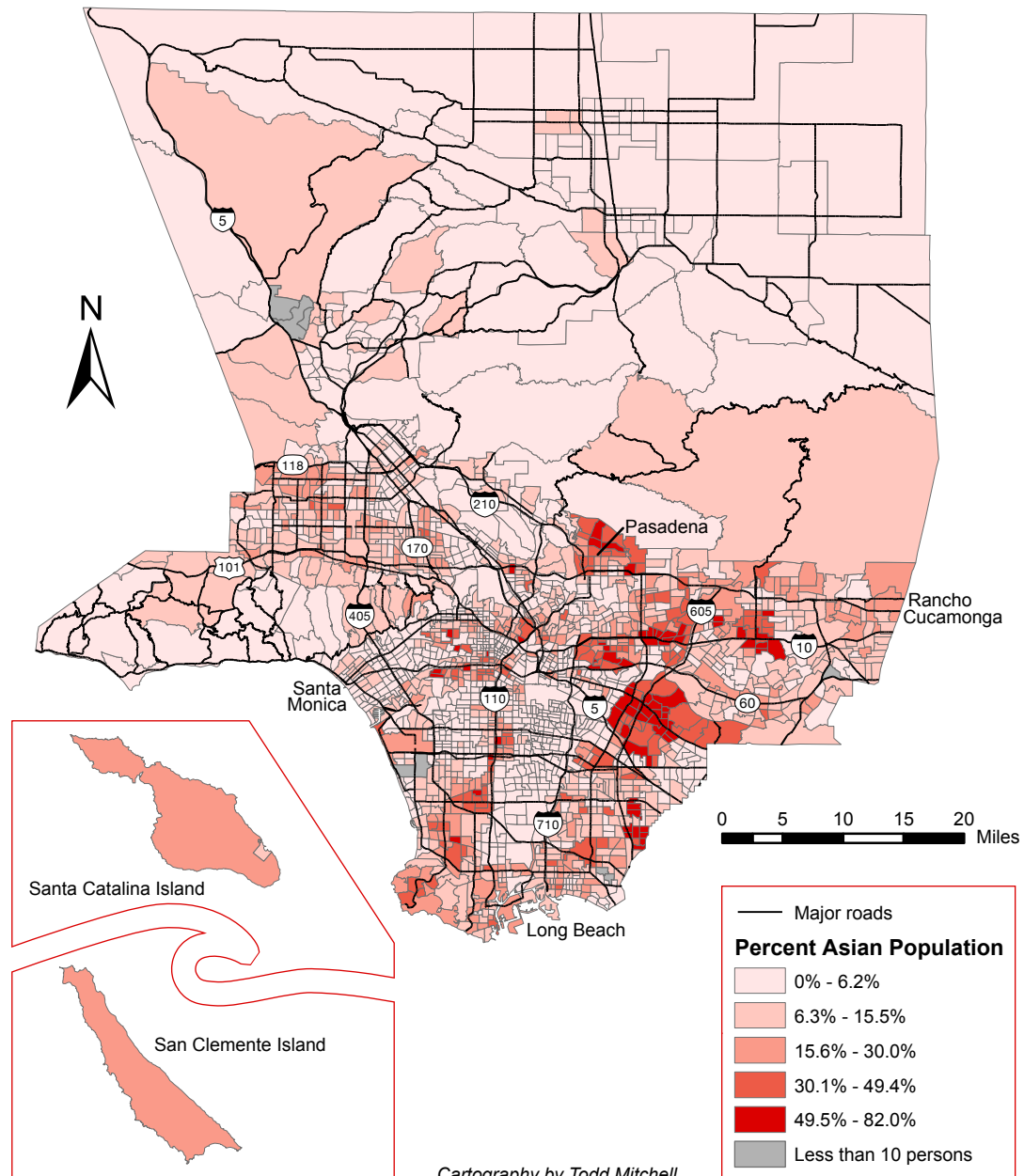
Photo courtesy of www.sightsofbigbearlake.com

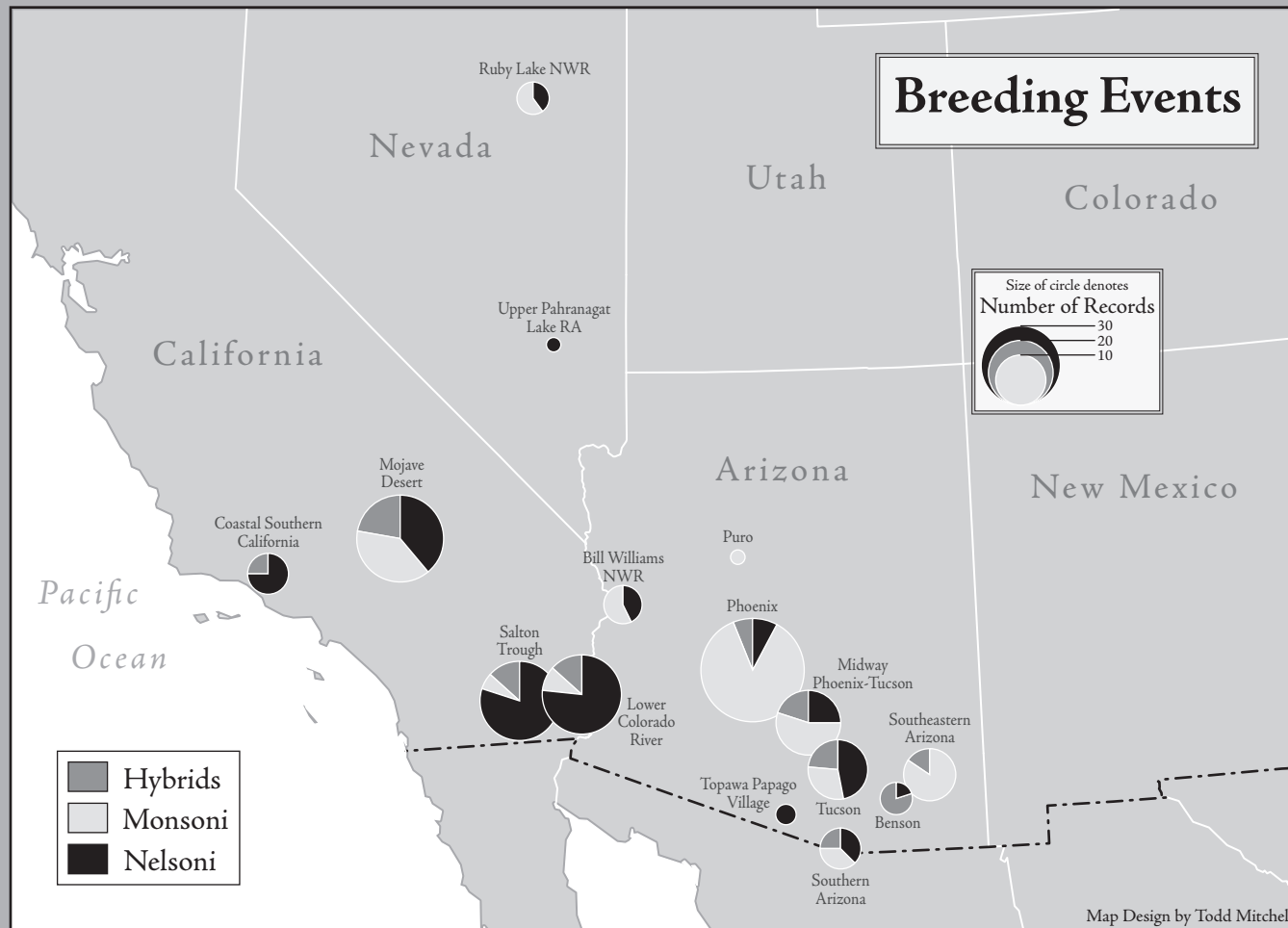
This is one of the many GIS generated maps I have done in the last few years. It was for an Advanced GIS assignment in Geostatistical Analysis, using those tools in ArcMap. Ideally, this would be exported to Illustrator if it were being published. I used kriging lines like this (only Illustrator generated) on my final project for a prediction map (seen in another PDF), also for the same class.



Percent Asian Population

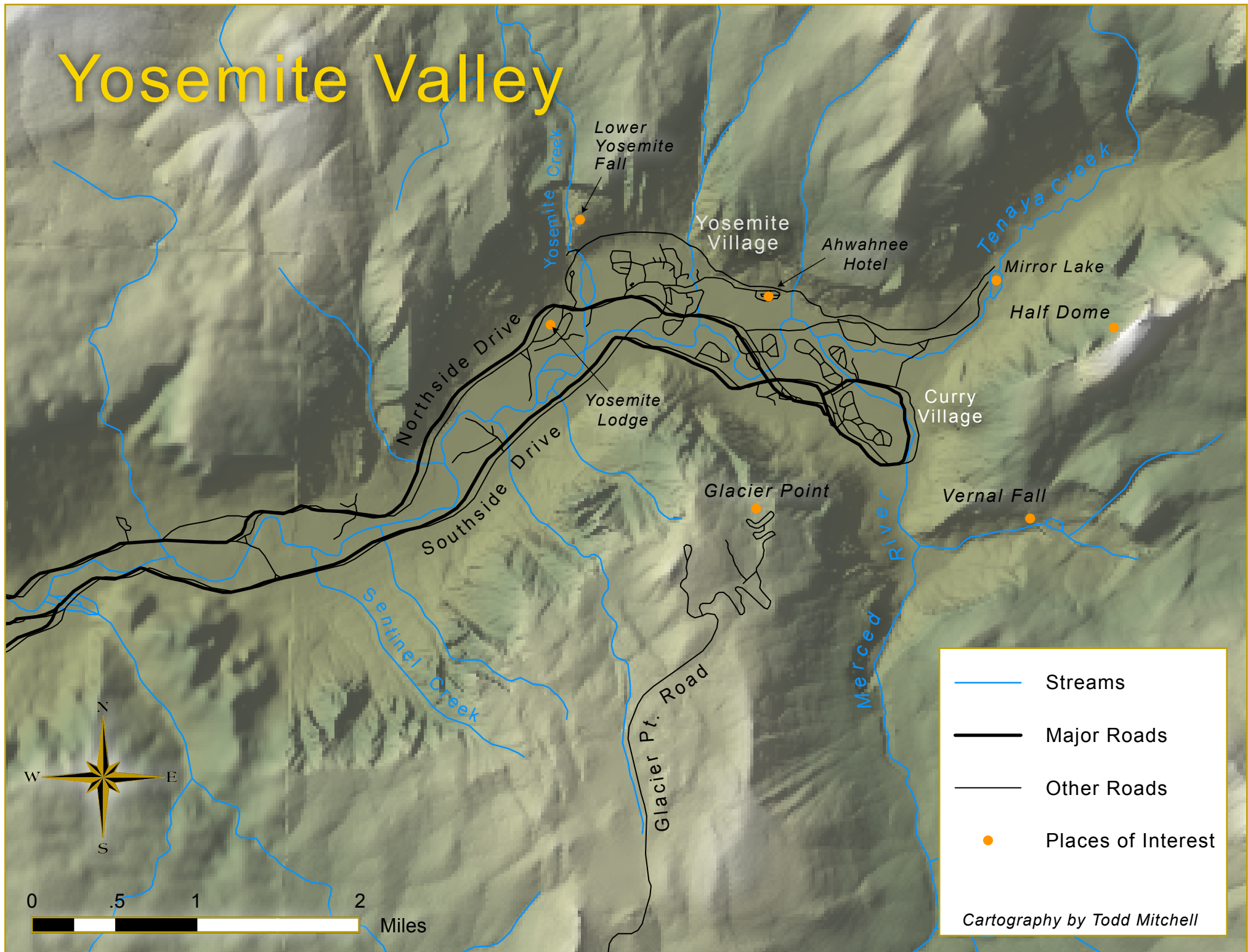
Los Angeles County, 2000





This is a graph map on bird species I made in the CSUN cartography class. Data obtained via research done by Walter Wehtje (CSUN) was pie-graphed using Illustrator's graph tool.

Yosemite Valley





This was the first organizational exercise in the cartography class at CSUN. A mess of lines needed to be classified and labeled (recognize the NPS symbols?) I added a subtle gradient on the lakes and contrasting hue in the relief tiff, as well as a custom north arrow.

The Etruscan Civilization, c. 700–200 B.C.



Cartography by Todd Mitchell

What can I say? I had a lot of fun with this map. Photoshop was used to layer the different areas and multi-faceted water. If you feel like diving into the sea, that was my intention. The 'comic' boxes were coincidental to the 'Ripley's Believe it or Not' books I remembered as a kid. And the compass rose... I made it from scratch, including a trace of an Etruscan horse exported from Photoshop. This is why I make maps. - TM